

London Investment Markets – Newsletter



London Investment Markets

LIM is the exclusive, institutional-grade trading platform providing a definitive edge for CFD, Forex, and Commodities traders.



London Investment Markets – News & Markets

LIM keeps you informed with the latest financial news, market analysis, and economic events that move global markets.

Week Commencing: March 09, 2026

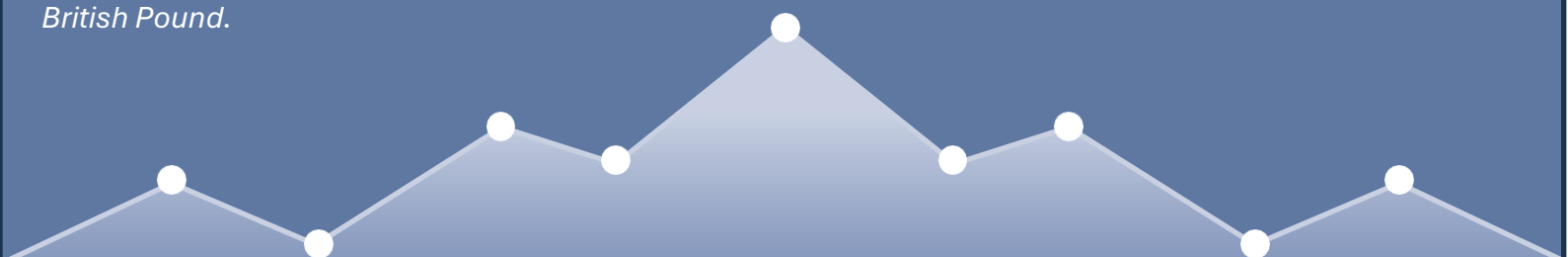
The financial landscape is currently defined by a "perfect storm" of geopolitical tension and macroeconomic uncertainty. As we head into the week of March 9, 2026, the primary focus remains the conflict in the Middle East and its direct impact on global energy markets.

With the disruption of shipping through the Strait of Hormuz, oil prices have seen a significant surge. For investors, this is acting as a "barometer for risk"—when oil climbs, broader equity markets are feeling the pressure. Adding to the unease, recent U.S. labor data signaled a cooling economy (a loss of 92,000 jobs in February), reigniting fears of stagflation.

Key Economic Data Watchlist

Expect volatility as the market digests these critical releases. Wednesday and Friday are shaping up to be the most influential days for central bank sentiment.

Note: The Bank of England will also hold inflation report hearings this week, which may drive volatility for the British Pound.



Date	Event	Focus
Mon, Mar 9	US Consumer Inflation Expectations	Gauge of public sentiment on future prices.
Tue, Mar 10	US Existing Home Sales	Insight into the impact of current borrowing costs.
Wed, Mar 11	US Consumer Price Index (CPI)	The main event. Will inflation stay persistent?
Thu, Mar 12	US Housing Starts & Building Permits	Measures the health of the construction sector.
Fri, Mar 13	US Core PCE Price Index	The Fed's preferred inflation gauge.
Fri, Mar 13	US Q4 GDP (2nd Estimate)	Confirming the pace of economic growth.

Trader's Takeaway: Caution Over Conviction

In an environment where headlines can dictate price action faster than fundamentals, the consensus among analysts is to **avoid overreacting**.

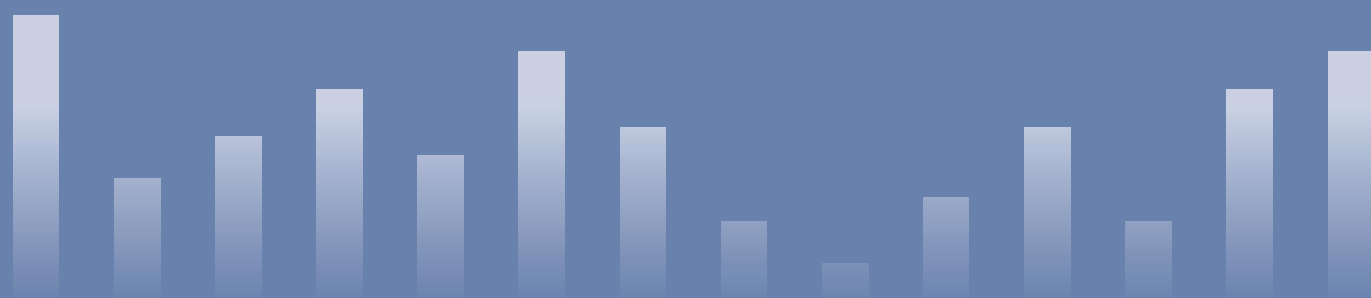
- **Energy Exposure:** High energy prices are currently supply-driven, not demand-driven, which makes this environment particularly tricky. Monitor crude oil as your primary indicator of market risk sentiment.
- **The "Flight to Quality":** With equity markets showing fragility, portfolios that are well-aligned with long-term risk tolerance are outperforming those chasing short-term volatility.
- **The Fed's Dilemma:** The combination of weakening labor data and rising energy-related inflation makes the Federal Reserve's upcoming decisions increasingly complex. Keep a close watch on how CPI and PCE data influence interest rate expectations.



A Quick Reminder

Daylight saving time in the United States began on March 8. **Market open and close times, along with economic data releases, have shifted one hour earlier** relative to previous weeks. Please adjust your trading schedule accordingly to avoid missing the volatility windows.

***Past performance does not reflect future results. The above is for marketing and general informational purposes only and are only projections and should not be taken as investment research, investment advice or a personal recommendation.**



Why Choose LIM

Institutional-Grade Trading

Access the same trading tools and conditions previously available only to large financial institutions.



Regulation

London Investment markets Limited is registered in the Marshall islands, Registered Number: 134064. Senior management is comprised of UK qualified Head of Compliance as well as English qualified lawyers who manage the firm to the highest standards of regulatory compliance.



Client Money Protection

Client money is segregated into a dedicated client money account.



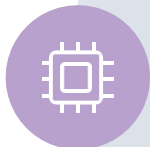
Corporate Governance

The firm is managed by a UK qualified Head of Compliance as well as English qualified lawyers. All procedures at LIM are drafted by market leading professionals.



Liquidity from Large Financial Institutions

Sophisticated technology allows us to provide wholesale interbank prices, historically available only to large financial institutions and corporations.



No Dealing Desk execution

All trades are executed by systems without human interventions.



Secure

Your data is protected by enterprise-grade encryption.