

# London Investment Markets – Education Hub



London Investment Markets

LIM is the exclusive, institutional-grade trading platform providing a definitive edge for CFD, Forex, and Commodities traders.



## London Investment Markets – News & Markets

LIM keeps you informed with the latest financial news, market analysis, and economic events that move global markets.

### **Explained: Strait of Hormuz and Global Oil Prices**

While WTI is the American benchmark, the **Strait of Hormuz** is the world's most critical "chokepoint" for Middle Eastern oil. As of March 2026, approximately **21 million barrels per day** (about 21% of global consumption) pass through this narrow waterway.

The oil flowing through the Strait is primarily categorized into three types:

#### **Medium and Light "Sour" Crude**

Most of the oil from the Persian Gulf is "sour," meaning it has a higher sulfur content than WTI.

- **Arab Light:** Despite the name, it is "heavier" and "sourer" than WTI. It is the flagship export of Saudi Arabia and the most common grade flowing through the Strait.
- **Murban (UAE):** A "light, sweet" grade from Abu Dhabi that is more similar to WTI. It is highly prized by Asian refiners.
- **Basrah Medium/Heavy (Iraq):** Heavier grades used for producing fuel oil and bitumen, but also refined into diesel.

## Condensates

These are ultra-light oils produced alongside natural gas.

- **South Pars (Iran) & Qatar:** These countries export massive amounts of condensates through the Strait. They are essential for the petrochemical industry to create plastics and synthetic fabrics.

## Refined Petroleum Products

It isn't just raw crude. Massive quantities of "processed" energy flow through:

- **Diesel and Jet Fuel:** Huge refineries in Kuwait, Saudi Arabia, and the UAE ship finished fuels directly to Europe and Asia.
- **LPG (Liquefied Petroleum Gas):** Propane and butane used for heating and cooking, particularly critical for the Indian market.

## The "LNG Factor" (Liquefied Natural Gas)

The Strait of Hormuz is the **only** exit for Qatari LNG. Qatar is one of the world's top exporters of natural gas. Unlike oil, which can sometimes be diverted via pipelines (like the Saudi East-West pipeline to the Red Sea), **LNG has no bypass**. If the Strait closes, the global supply of natural gas drops by nearly 20% instantly.

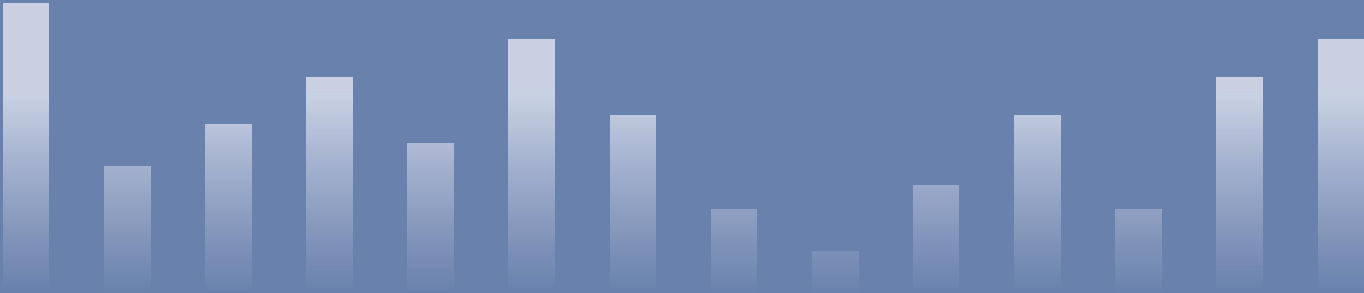
## Why this affects WTI (The Ripple Effect)

Even though WTI is produced in Texas, when these Middle Eastern grades are blocked:

1. **Global Scarcity:** European and Asian refiners lose their primary source.
2. **Bidding War:** They begin bidding up the price of *any* available oil, including U.S. WTI.
3. **Arbitrage:** Traders start shipping WTI across the ocean to fill the gap, causing U.S. domestic prices to skyrocket.



**\*Past performance does not reflect future results. The above is for marketing and general informational purposes only and are only projections and should not be taken as investment research, investment advice or a personal recommendation.**



# Why Choose LIM

## Institutional-Grade Trading

Access the same trading tools and conditions previously available only to large financial institutions.



### Regulation

London Investment markets Limited is registered in the Marshall islands, Registered Number: 134064. Senior management is comprised of UK qualified Head of Compliance as well as English qualified lawyers who manage the firm to the highest standards of regulatory compliance.



### Client Money Protection

Client money is segregated into a dedicated client money account.



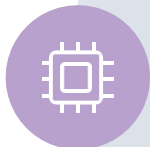
### Corporate Governance

The firm is managed by a UK qualified Head of Compliance as well as English qualified lawyers. All procedures at LIM are drafted by market leading professionals.



### Liquidity from Large Financial Institutions

Sophisticated technology allows us to provide wholesale interbank prices, historically available only to large financial institutions and corporations.



### No Dealing Desk execution

All trades are executed by systems without human interventions.



### Secure

Your data is protected by enterprise-grade encryption.