

London Investment Markets – Newsletter



London Investment Markets

LIM is the exclusive, institutional-grade trading platform providing a definitive edge for CFD traders in Forex, Crypto, Equities, Indices, and Commodities.



London Investment Markets – News & Markets

LIM keeps you informed with the latest financial news, market analysis, and economic events that move global markets.

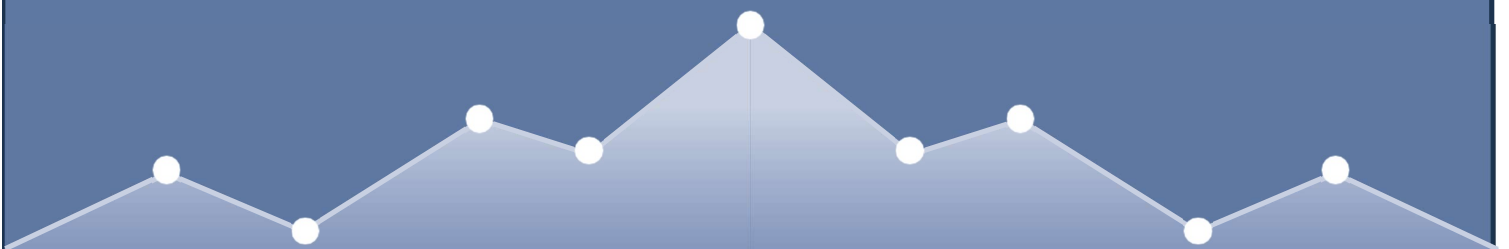
Week Commencing: March 30, 2026

Quarter-End Rebalancing & The Jobs Litmus Test

As we close out a bruising first quarter, the market remains locked in a battle between "Stagflation" fears and "Safe Haven" demand. With the S&P 500 down nearly **6%** for March and the **VIX** hovering near **30**, traders are eyeing this week's labour data as the ultimate decider for the Fed's next move.

Market Backdrop: The "Grizzly" Quarter-End

Global equities are wrapping up their fifth consecutive losing week. The narrative has shifted from "soft landing" to "geopolitical survival." **WTI Crude** is stabilizing around **\$94–\$97**, but the energy-driven inflation spike is already showing up in Eurozone data, where inflation is expected to jump to **2.8%** this week—its highest in over two years.



Key Themes for the Week Ahead

The March Non-Farm Payrolls (Friday)

This is the heavyweight event of the week. After February's shock contraction of **92,000 jobs**, markets are desperate for a "sanity check."

- **The Forecast:** A modest rebound of **+48,000 to +50,000 jobs** is expected.
- **The Trade:** A "miss" here (anything negative or near zero) will likely trigger recession alarms, potentially forcing a "risk-off" flight to **Treasuries** and **Gold**, even if the Fed remains hawkish.

Central Bank Insights (Tuesday/Wednesday)

While no rate decisions are scheduled, the "fine print" from previous meetings will be released:

- **RBA Minutes (Tuesday):** Following back-to-back hikes to **4.10%**, traders will look for how many members favoured a pause. The **AUD** is highly sensitive to any shift in this 5-4 split vote.
- **BoJ Summary of Opinions (Monday):** With Japan's inflation cooling slightly to **1.6%**, any hawkish signals regarding the "Sanaenomics" policy shift will be closely scrutinized for **JPY** volatility.

China's PMI "Reality Check" (Tuesday/Wednesday)

China, the world's largest energy importer, releases its **NBS and Caixin PMIs**.

- **The Significance:** These reports will reveal how much the Middle East energy spike is strangling Chinese manufacturing. Stagnation here would be a major headwind for global **Materials** and **Industrial** sectors.

Economic Calendar: High-Impact Events

Day	Event	Impact	Forecast / Previous
Mon	Germany Prelim CPI (Inflation)	High	2.6% (YoY)
Tue	China NBS Manufacturing PMI	High	49.8 (Contraction)
Tue	UK Final Q4 GDP	Medium	-0.2% (Revised)
Wed	US ADP Employment / ISM Manufacturing	High	145K / 50.2
Thu	Switzerland CPI / Australia Trade Balance	Medium	0.6% / \$8.1B
Fri	US Non-Farm Payrolls (NFP)	Critical	+50K
Fri	Good Friday	Holiday	Markets Closed (US/UK/EU)

Trading Playbook: Risk & Opportunity

- **Indices (S&P 500 / Nasdaq):** The **6,470** level on the S&P 500 is the line in the sand. A weekly close below this suggests further downside toward the **6,300** support zone.
- **Forex (USD/JPY):** The Dollar Index (**DX**) has breached **100.00**. As long as US yields remain elevated due to "sticky" inflation, the Dollar remains the king of the safe havens.
- **Earnings Spotlight: Nike (NKE)** reports on Tuesday. Watch for commentary on consumer spending power—if the retail giant misses, expect a broader drag on the **Dow Jones**.

Note on Liquidity: Friday is **Good Friday**. Most major exchanges in the US, UK, and Europe will be closed. Expect "thin" markets on Thursday afternoon and potential gap openings on the following Sunday.

***Past performance does not reflect future results. The above is for marketing and general informational purposes only and are only projections and should not be taken as investment research, investment advice or a personal recommendation.**



Why Choose LIM

Institutional-Grade Trading

Access the same trading tools and conditions previously available only to large financial institutions.



Regulation

London Investment markets Limited is registered in the Marshall islands, Registered Number: 134064. Senior management is comprised of UK qualified Head of Compliance as well as English qualified lawyers who manage the firm to the highest standards of regulatory compliance.



Client Money Protection

Client money is segregated into a dedicated client money account.



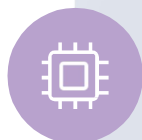
Corporate Governance

The firm is managed by a UK qualified Head of Compliance as well as English qualified lawyers. All procedures at LIM are drafted by market leading professionals.



Liquidity from Large Financial Institutions

Sophisticated technology allows us to provide wholesale interbank prices, historically available only to large financial institutions and corporations.



No Dealing Desk execution

All trades are executed by systems without human interventions.



Secure

Your data is protected by enterprise-grade encryption.